

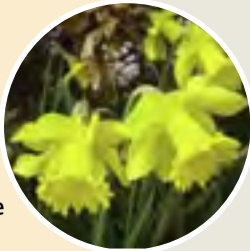
School gardening notes for March



Nótaí garraíodóireachta scoile do Mhí an Mhárta

Diary

We all felt the freshness of nature after the rain. Observed the cheerful yellow colours in abundance amongst the green everywhere. First class sowed candytuft in a sink container for the butterflies. Second sowed beans, radishes, carrots and spinach. They were all very willing helpers. Third studied pond, corn patch and woodland edge.



Training

- ✦ Training: SEED (www.schoolearthened.ie) provide training in the basic skills of school gardening to whole school staffs. See www.schoolearthened.ie
- ✦ Last chance to plant bare-rooted trees and shrubs. Participate in Tree Week. See <http://treecouncil.ie/initiatives/tree-week/> The Tree Council will be giving out 15,000 trees that week.
- ✦ Investigate tree buds and have a bud race. See www.schoolearthened.ie/paddys-school-garden/video-mar-tree-buds.html

Biodegradable pots



Teachers

- | | | | |
|------------|---|--------|---|
| Junior In. | Sprout mange tout or sugar snap peas in damp tissue and place in a warm place such as a hot press for a couple of days. Ensures every child grows a viable seed. Sow in biodegradable pots and place in light box facing sunlight. See www.schoolearthened.ie/pdf/intouch/WorkinginTandemMarch_March2011.pdf | | www.youtube.com/watch?v=yACQtcS1cSU
http://gardenofeaden.blogspot.ie/2009/01/how-to-grow-lettuce-from-seed.html |
| Senior In. | Sow ordinary peas such as Kelvedon Wonder in gutter pipes indoors. See www.schoolearthened.ie/paddys-school-garden/video-mar-peas-gutter.html | Third | Plant new potatoes around St. Patrick's day. See www.schoolearthened.ie/paddys-school-garden/video-mar-early-potatoes.html |
| First | Sow beetroot indoors in a modular tray. See www.quickcrop.ie/learning/plant/beetroot | Fourth | Sow carrots thinly indoors in dustbins. Need a temperature of 10°C to germinate. See www.schoolearthened.ie/pdf/intouch/ZoomVegetables_March2012.pdf |
| Second | Sow lettuce and spring onions indoors in modules indoors. See | Fifth | Plant early potatoes in 4 potato grow bags. See www.schoolearthened.ie/paddys-school-garden/video-mar-potato-growth.html |
| | | Sixth | Sow lettuce seed indoors. See www.gardenofeaden.blogspot.ie/2009/01/how-to-grow-lettuce-from-seed.html |

Literacy/Litearthacht

Bare-rooted trees/Crainn fhréamhloma: These are small trees that aren't sold in containers. They must be planted in any month with an 'r' except April and September. *Crainn bheaga nach ndíoltar i bpotáí. Caithfear iad a chur in Eanáir, i bhFeabhra, i Mí an Mhárta, i Mí Dheireadh Fómhair, i Mí na Samhna nó i Mí na Nollag.*

Bumblebee/Bumbóg: A species of bee. There are 20 species in Ireland and four of these are threatened with extinction. They are important pollinators. *Speiceas de bheach. Tá 20 speiceas in Éirinn agus tá 4 speiceas i mbaol a ndíothaithe. Is pailneoirí tábhachtacha iad.*






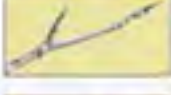

Biodegradable pot/Pota in-bhithmhillte: A pot such as a paper pot which eventually breaks down and returns to the soil. *Pota (atá déanta as páipéar mar shampla amháin) a bhriseann síos agus a fhilleann ar an ithir.*

Candytuft/Praiseach chaindiach: This can be an annual or a perennial plant. It has abundant nectar and so is attractive to bees and butterflies. *Bliantóg nó ilbhliantóg. Tá flúirse neachtair inti agus tarraingíonn sí beacha agus féileacáin chuici.*

Buíochas do Marie Whelton (MIE) don aistriúchán.

WINTER BUD KEY

Find twigs of various trees with bud attached. Observe carefully the bud of one twig. Ask yourself questions such as those below. If your answer is yes, you may have identified the bud. If your answer is no, continue down until you detect the correct name for the bud.

YES		NO
	Are the buds egg-shaped and hairy?	
YES Rowan		NO
	Are the buds brown and sticky?	
YES Horse chestnut		NO
	Are the buds hard and black?	
YES Ash		NO
	Is there a cluster of buds at the tip?	
YES Oak		NO
	Are the buds small alternate and pointy?	
YES Silver birch		NO
	Are the buds long, thin and pointed?	
YES Beech		NO
	Are the buds green, egg-shaped and scaly?	
YES Sycamore		NO

Biodiversity

- ✦ Sow sunflower seeds indoors in biodegradable pots. The harvested seeds will feed birds next winter. See www.schooleartheed.ie/pdf/intouch/WorkinginTandemMarch_March2011.pdf
- ✦ Make a bumblebee nest. See www.gardenersworld.com/how-to/projects/wildlife-gardening/how-to-make-a-bumblebee-nest/167.html
- ✦ Continue composting. Make sure to incorporate an equal amount of greens and browns in heap. See www.schooleartheed.ie/paddys-school-garden/video-dec-make-compost.html



Greens and browns

Mixture of greens and browns

Living things

- ✦ See: www.heritagecouncil.ie/fileadmin/user_upload/Publications/Education/Wildlife_in_Schools.pdf for a list of plants and animals suitable for each class.

General

All my previous *InTouch* articles are now available on www.schooleartheed.ie/intouch-pdfs.html as well as on the INTO website

It's the beginning of the planting season. Nature is awakening reluctantly. Now is the time to sow indoors so that plants can be moved outside in April.



Wildlife garden in SC Treasa, Donore Avenue



Primroses

Cookery

Make a pesto. See <http://apps.rhs.org.uk/schoolgardening/teachershome/monthbymonthrecipesmarch.aspa>



PADDY MADDEN lectures on SESE in the Marino Institute of Education. He also gives short courses to whole staffs on school gardening. His book *Go Wild At School*, has recently been reprinted. Available for €18 from paddy.madden@mie.ie (Includes p&p).

